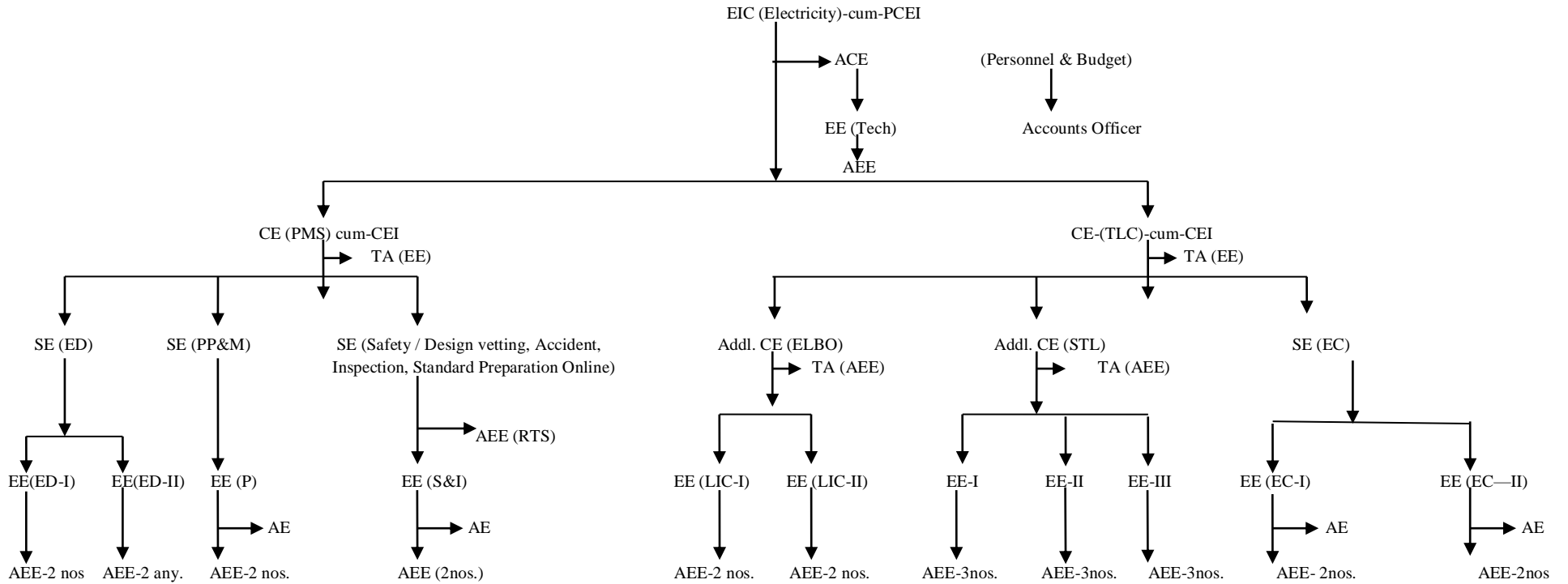


Organizational Structure of EIC (Electricity)-cum-PCEI, Odisha, Bhubaneswar



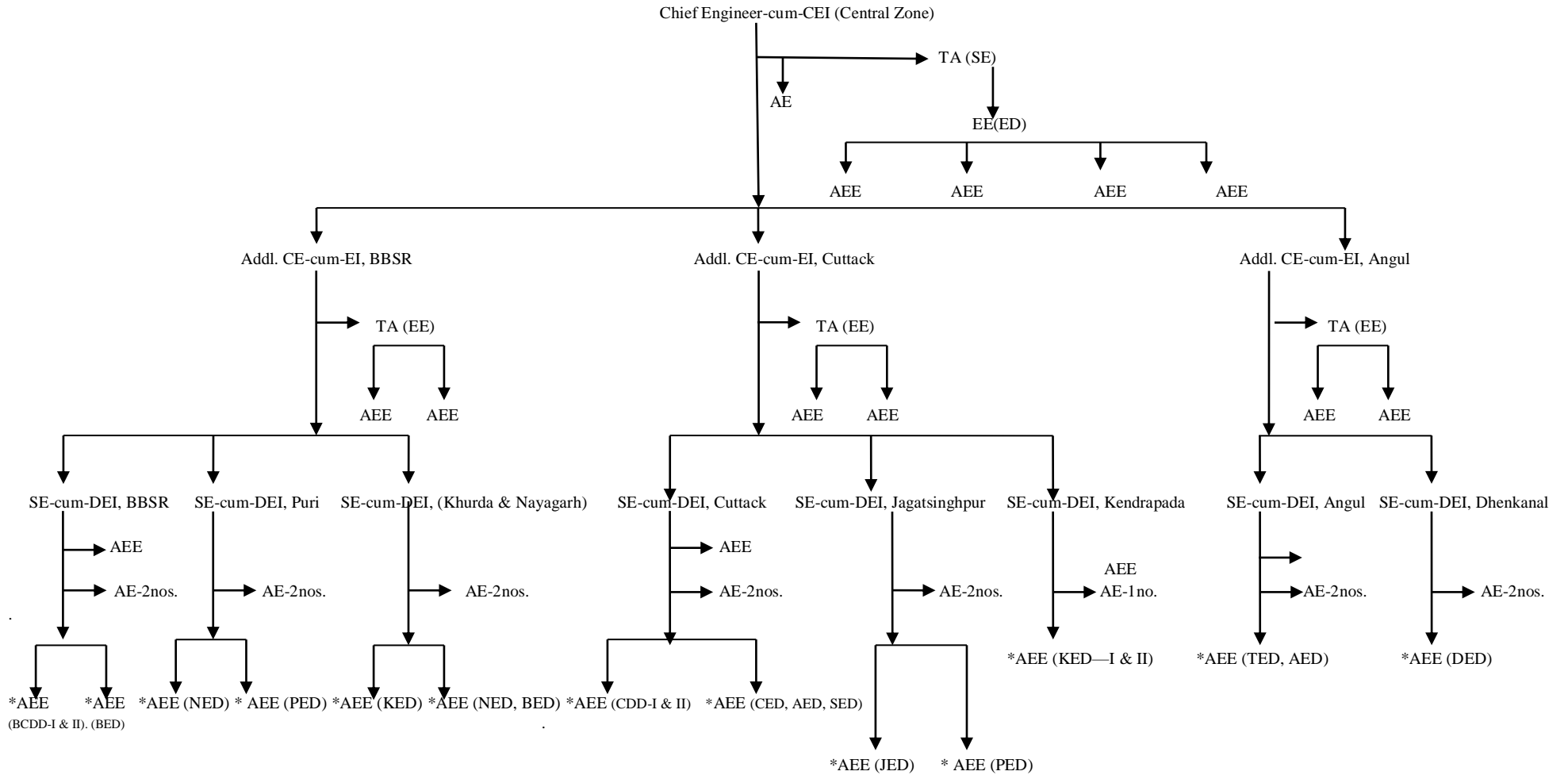
EE(OREDA) EE(GA Vigilance)-Vacant

All Together								
Post Name	EIC	CZ	WZ	NZ	SZ	Total	others	Total
EIC	1	-	-	-	-	1	-	1
CE	2	1	1	1	1	6	-	6
ACE	3	3	3	3	3	15	-	15
SE	4	9	8	6	8	35	3	38
EE	14	4	5	4	4	31	24	55
AEE	29	26	28	22	22	127	104	231
Sub Total								346
AE	4	16	17	10	14	61	82	143
JE	-	-	-	-	-	0	0	142
G. Total								631

EIC = 1
CE = 2
ACE = 3
SE = 4
EE = 16
AEE = 29
AE = 04

.....
Total = 59 nos

Chief Engineer (Central Zone), Bhubaneswar

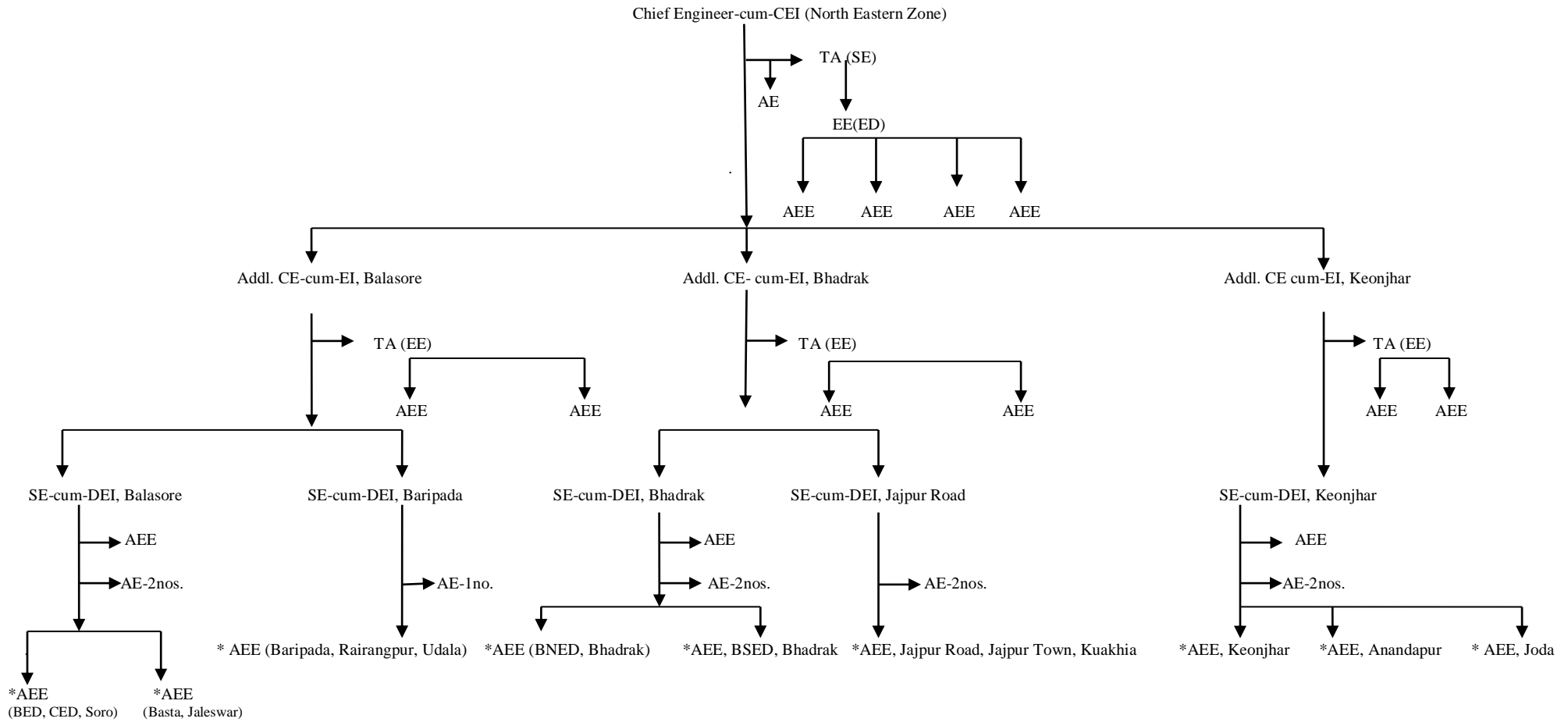


CE = 1
ACE = 3
SE = 9
EE = 4
AEE = 26
AE = 16

Total = 59 nos.

*AEE-cum-AEI

Chief Engineer (North Eastern Zone), Balasore



CE = 1

ACE = 3

SE = 6

EE = 4

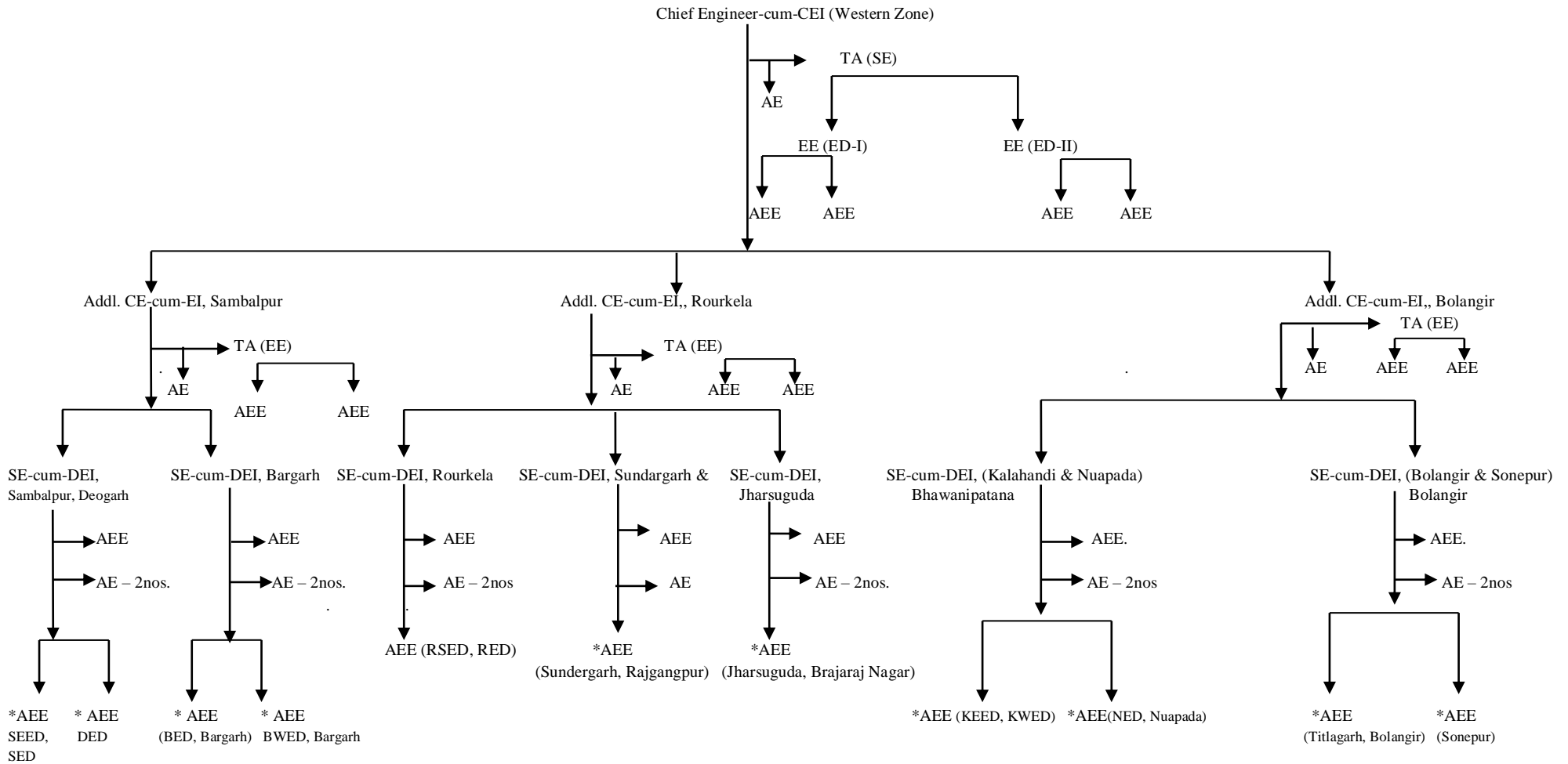
AEE = 22

AE = 10

Total = 46 nos.

***AEE-cum-AEI**

Chief Engineer (Western Zone), Sambalpur

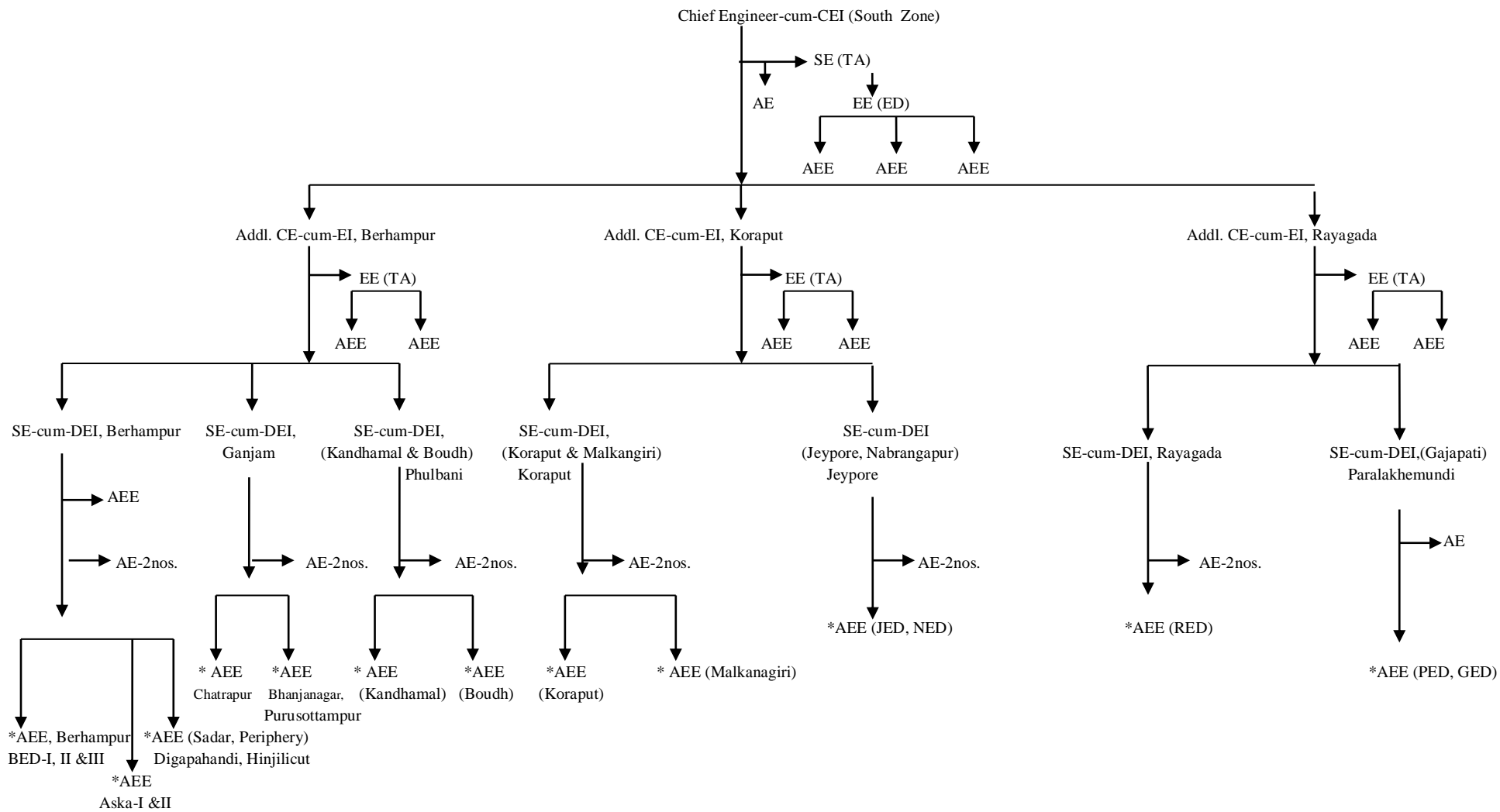


CE = 1
ACE = 3
SE = 8
EE = 5
AEE = 28
AE = 17

Total = 61 nos.

*AEE-cum-AEI

Chief Engineer (South Zone), Berhampur, Ganjam



CE = 1
ACE = 3
SE = 8
EE = 4
AEE = 22
AE = 14

Total = 52 nos.

*AEE-cum-AEI