



GOVT. OF ODISHA
OFFICE OF THE ENGINEER-IN-CHIEF, ELECTRICITY-CUM-PCEI (O)
POWER HOUSE SQUARE, UNIT-V, BHUBANESWAR

Uploaded the same
in our official website
& send copies to all
Inspectors in their
mail addresses

[Signature]
18/2

No. 383 (M) / Dated, BBSRs, the 13/2/15
From

Sri S.P. Swain,
Chief Engineer-Cum-CEI-(TC&L)
Bhubaneswar.

To

All the Superintending Engineers-Cum-
Electrical Inspectors.

Sub: - **Jurisdiction of officers for inspection etc.**

Sir,

Enclosed please find herewith the tree chart approved by the Government for the restructuring the Electrical Engineering Cadre for your information and necessary action. You are requested to intimate your subordinate officers regarding their jurisdiction as indicated in the tree chart.

Encl: - As Above.

Yours faithfully,

[Signature]
Chief Engineer-Cum-CEI-(TC&L)

Memo.No. 384 dated 13/2/15.

Copy submitted to the Engineer-In-Chief, Electricity-Cum-PCEI (O) BBSR for favour of information.

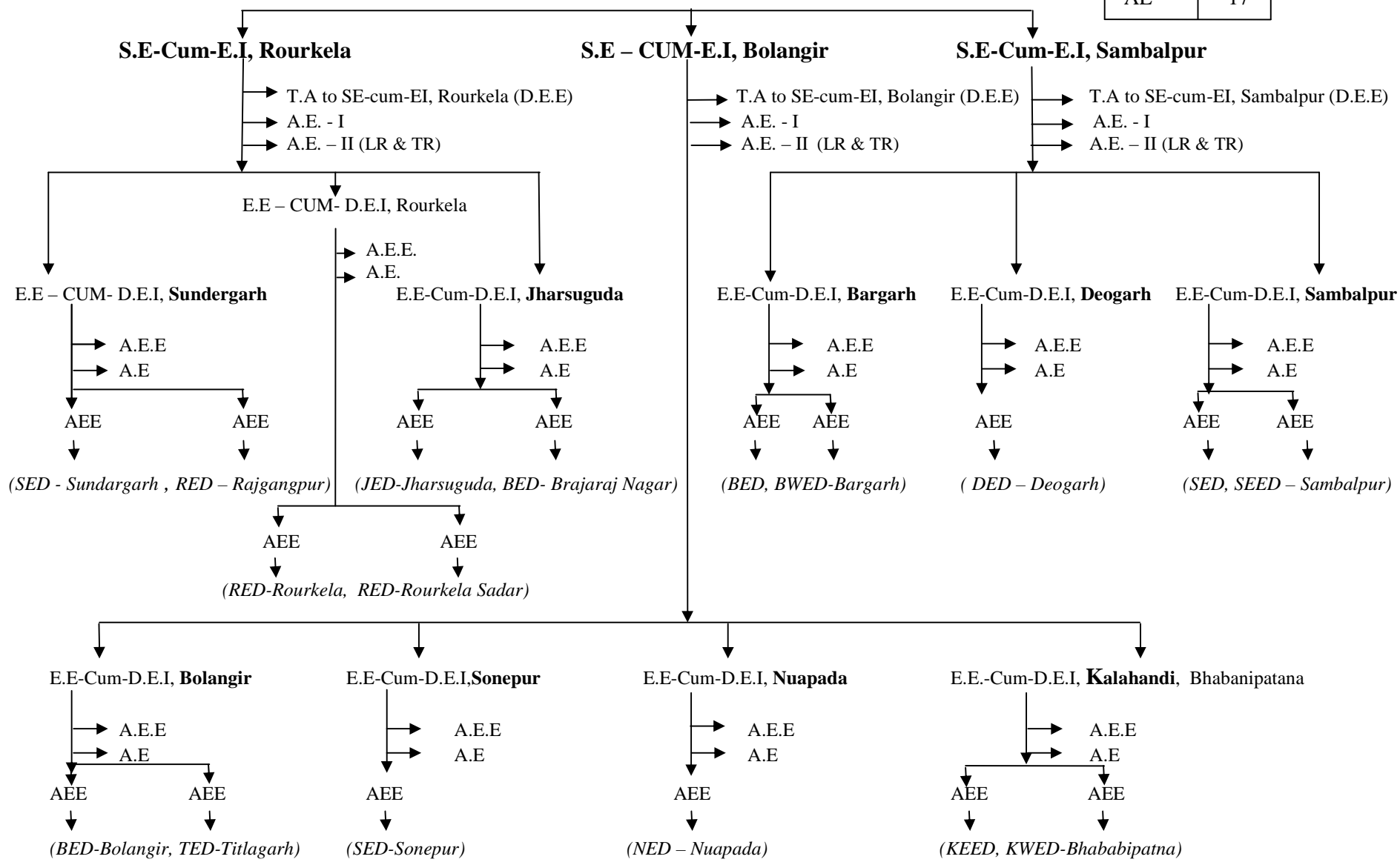
[Signature]
Chief Engineer-Cum-CEI-(TC&L)

EE (IR/TA) / EE (EC & T)
[Signature]
18/2/15

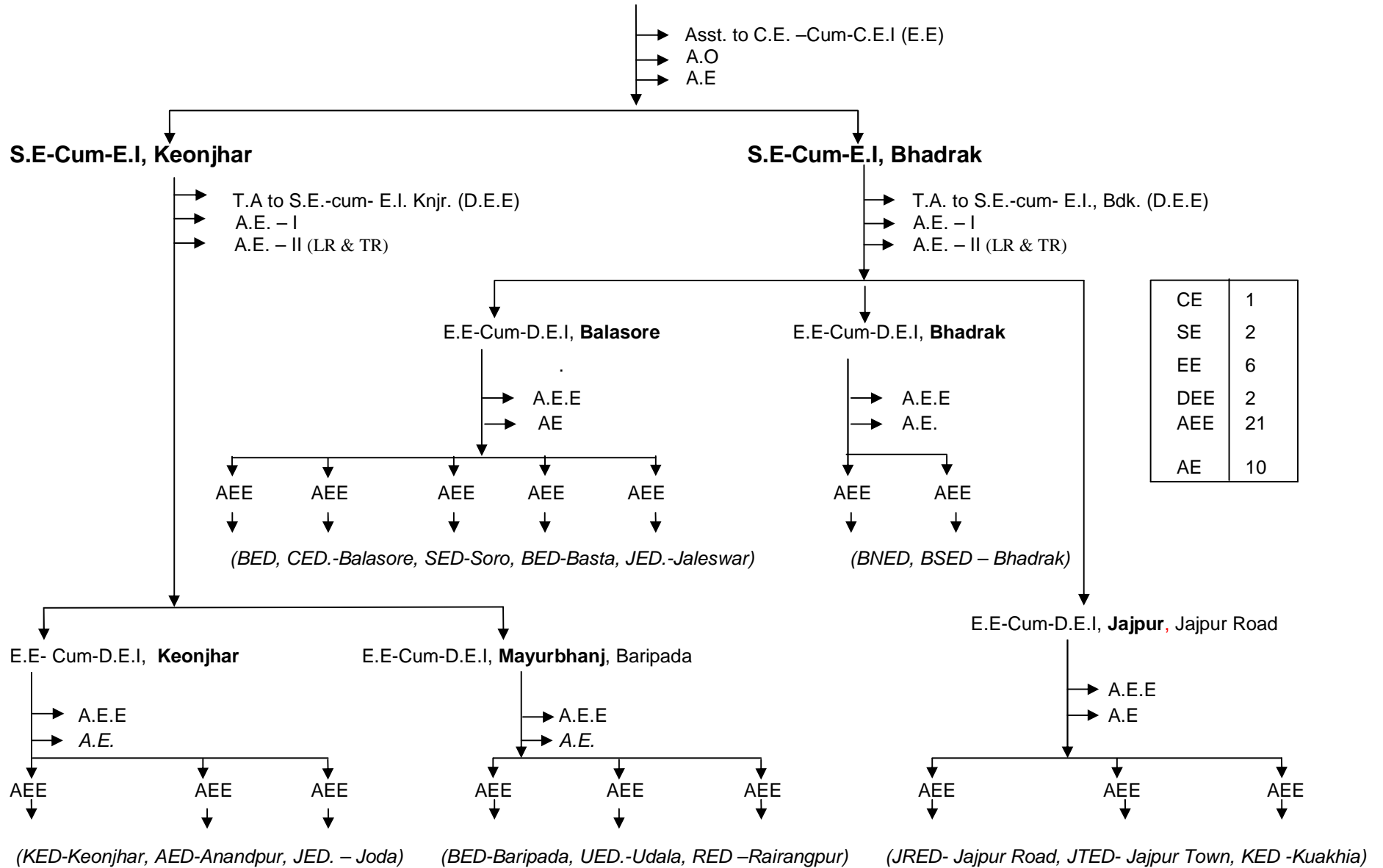
Chief Engineer-Cum-Chief Electrical Inspector, WESTERN Zone, Sambalpur, Odisha

CE	1
SE	3
EE	11
DEE	3
AEE	27
AE	17

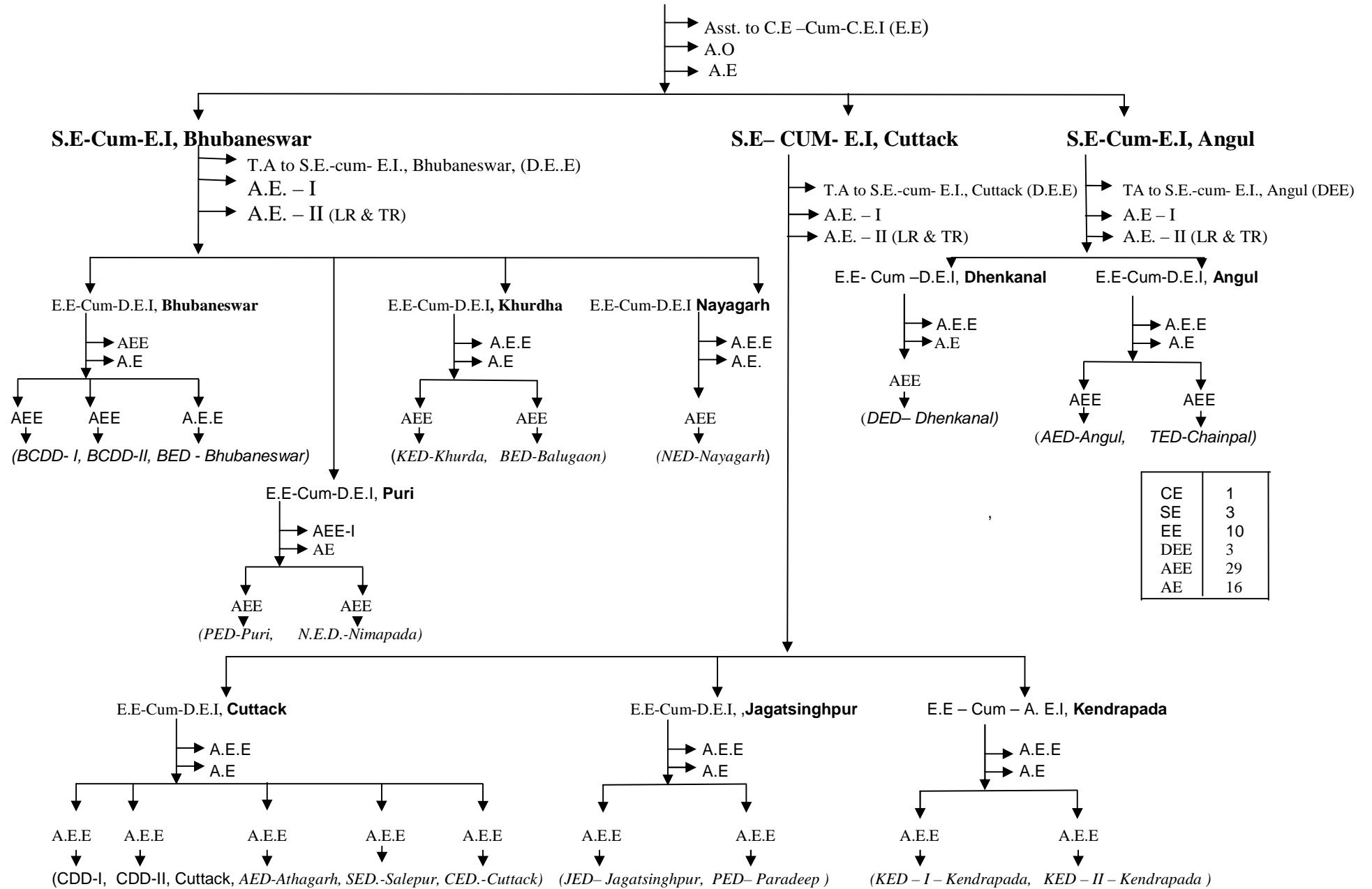
- Asst. to C.E-Cum-C.E.I (E.E)
- A.O
- A.E



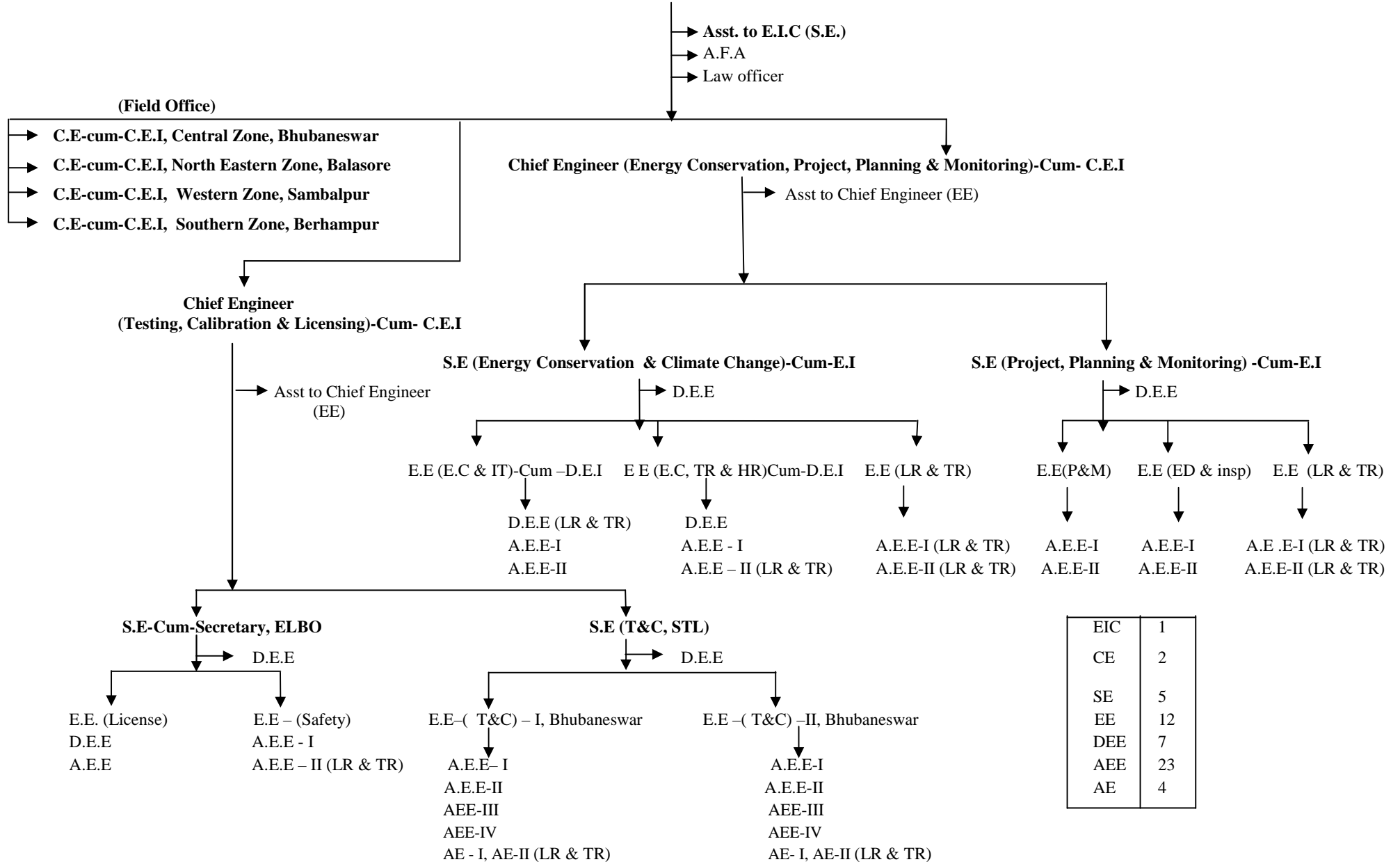
Chief Engineer-Cum-Chief Electrical Inspector, NORTH EASTERN Zone, Balasore, Odisha



Chief Engineer-Cum-Chief Electrical Inspector, CENTRAL ZONE, ODISHA, BHUBANAESWAR

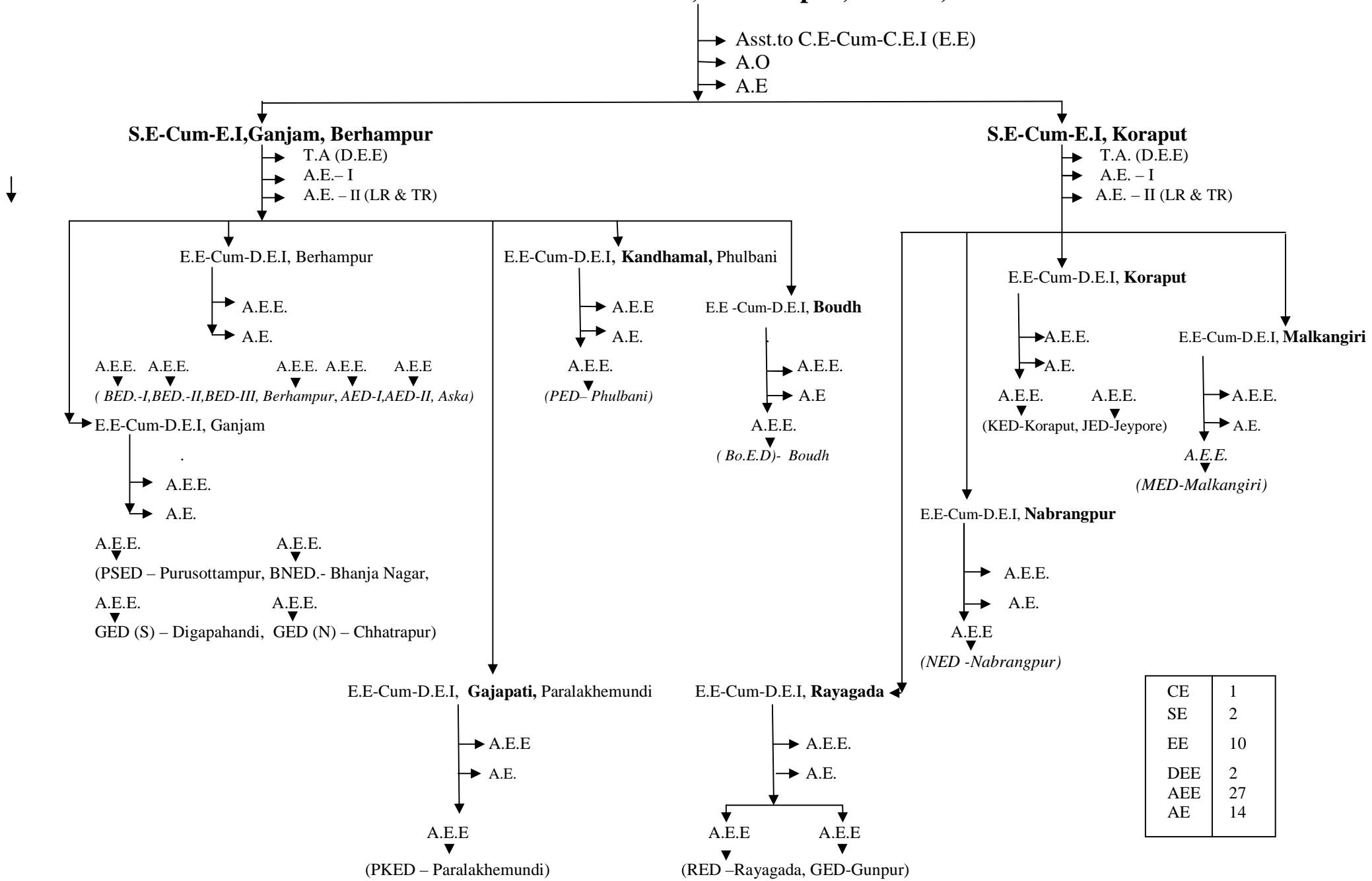


Engineer –In- Chief-Cum-Principal Chief Electrical Inspector Odisha, Bhubaneswar



EIC	1
CE	2
SE	5
EE	12
DEE	7
AEE	23
AE	4

Chief Engineer-Cum-Chief Electrical Inspector, SOUTH Zone, Berhampur, Odisha,



CE	1
SE	2
EE	10
DEE	2
AEE	27
AE	14